



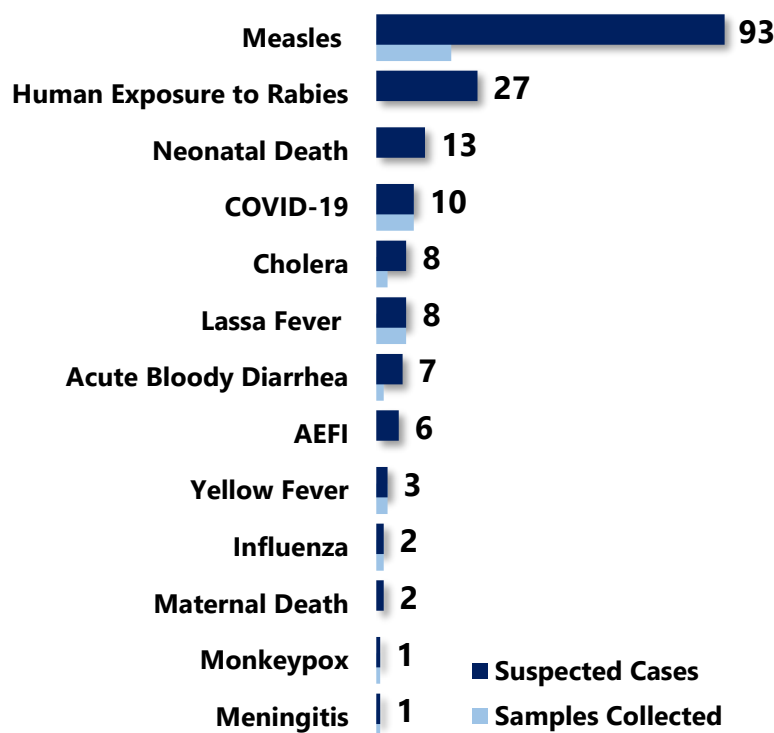
# Liberia IDSR Epidemiology Bulletin

Epi-week 44 (October 31- November 6, 2022)

Country Population: 5,104,413 | Volume 17 Issue 44 || Oct 31 – Nov 6, 2022 || Data Source: CSOs from 15 Counties and Laboratory

## Highlights

Figure 1: Public Health Events Reported



## Keynotes and Events of Public Health Significance

- ♦ A total of **181 events** of public health importance including **19 deaths** were reported
- ♦ **Completeness and timeliness** of health facility reports were **100%** and **99%** each
- ♦ **Ongoing Lassa fever** outbreak in **4** Counties
- ♦ **Ongoing Measles** outbreak in **13** Counties
- ♦ **Ten new confirmed COVID-19 cases** in **2** Counties

\*Adverse Events Following Immunization/Adverse Drug Reaction

## Reporting Coverage

Table 1: Health Facility Weekly IDSR Reporting Coverage, Liberia, Epi-week 44, 2022

County	Expected Reports From HF*	Reports Received	Received on Time	Completeness (%)	Timeliness (%)
Bomi	26	26	26	100	100
Bong	57	57	57	100	100
Gbarpolu	16	16	14	100	88
Grand Bassa	36	36	36	100	100
Grand Cape Mount	34	34	34	100	100
Grand Gedeh	24	24	24	100	100
Grand Kru	23	21	21	96	96
Lofa	66	66	66	100	100
Margibi	68	68	68	100	100
Maryland	27	27	27	100	100
Montserrado	326	326	326	100	100
Nimba	88	85	85	97	97
Rivercess	21	21	21	100	100
River Gee	20	20	20	100	100
Sinoe	37	37	37	100	100
<b>Liberia</b>	<b>869</b>	<b>869</b>	<b>868</b>	<b>100</b>	<b>99</b>

869(99%)  
Health facilities reported IDSR data

93 (100%)  
Health districts reported IDSR data

868(99%)  
Health facilities reported timely IDSR data

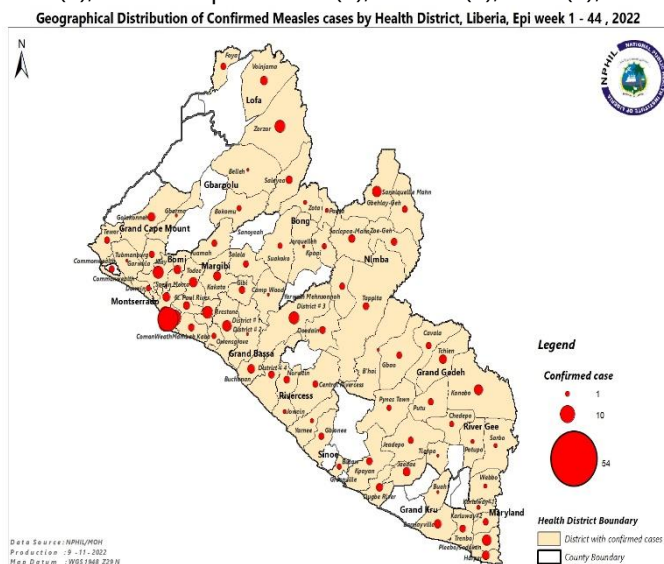
- ♦ The national target for weekly IDSR reporting is 80%. Health facility timeliness is monitored at the health district level
- ♦ All counties submitted weekly IDSR reports to the national level on time except for River Gee

Legend: ≥80 <80

## Vaccine-Preventable Diseases

### Measles

- 👉 Ninety-three (93) suspected cases including 4 deaths were reported: Grand Bassa (26 including 4 death), Montserrado (16), Maryland (14), Grand Gedeh (8), Grand Kru (6), Grand Cape Mount (6), Nimba (5), Lofa (5), Rivercess (3), Margibi (2), Bomi (1), and River Gee (1), Counties
- 👉 Seventeen (17) specimens collected and pending testing
- 👉 Vaccination status among suspected cases
  - Vaccinated: (47) 51%
  - Not vaccinated: (27) 29%
  - Unknown: (19) 20%
- 👉 Age distribution among suspected cases
  - < 5 years: (51) 55%
  - ≥ 5 years: (42) 45%
- 👉 Cumulatively, eight thousand, one hundred seventy (8,170) suspected cases have been reported including 84 deaths
  - (7,589) 93% confirmed:
    - ✓ Laboratory confirmed: (486/7,589) 6%
    - ✓ Clinically compatible: (565/7,589) 7%
    - ✓ Epidemiologically linked: (6,538/7,589) 86%
  - Non-measles discarded: 581
    - ✓ 58 tested positive for Rubella
- 👉 Proportion of samples collected: (1,316/8,170) 16%
- 👉 Proportion of samples tested: (1,070/1,316) 81%
- 👉 CFR: (84/7,589) 1.1%



**Geographical distribution of Measles Cases by epidemiological classification, health district, Liberia, Epi-week 1 – 44, 2022**

## Outbreak

### Measles: (Situation update from 13<sup>th</sup> December- 6<sup>th</sup> November 2022)

#### Montserrado County: Commonwealth, Bushrod, Somalia Drive, St. Paul, Central Monrovia, Todee, and Careysburg Districts

- 👉 Sixteen (16) new cases were reported from Somalia Drive (5), Bushrod (4), Commonwealth (4), St. Paul (2), and Todee (1) Districts
- 👉 A total of 4,142 cases have been confirmed including sixty-five (65) deaths
  - Median age 6 (1month-59years)
  - Not Vaccinated- (2,107/4,142) 51%
  - Vaccinated - (1,995/4,142) 48%
- 👉 CFR (65/4,142) 1.6%

#### Bong County: Suakoko, Zota, Jorquelleh, Salala, and Panta Districts (Situation update from 20<sup>th</sup> December 2021-6<sup>th</sup> November 2022)

- 👉 No new case was reported
- 👉 A total of 413 cases have been confirmed including two (2) deaths
  - Median age 8 (1 month - 38 years)
  - Vaccinated - (119/413) 29%
  - Not vaccinated - (109/413) 26%
  - CFR (2/413) 0.5%



# Liberia IDSR Epidemiology Bulletin

Epi-week 44 (October 31- November 6, 2022)

## **Lofa County: Voinjama, Foyah, Zorzor, and Salayea Districts (Situation update from 21st January- 6<sup>th</sup> November 2022)**

- 👉 Three (3) new cases were reported from Voinjama (2), and Zorzor (1) Districts
- 👉 A total of 177 cases have been confirmed
  - Median age: 10 (2 months-46years)
  - Vaccinated: (161/177) 91%
  - Not vaccinated: (8/177) 5%

## **Nimba County: Gbehlay-Geh, Sacleapea-Mah, Zoe-Geh, Tappita, Yarwin Mehnsonnoh, and Sanniquellie-Mah Districts (Situation update from 20<sup>th</sup> January-6<sup>th</sup> November, 2022)**

- 👉 Five (5) new cases were reported from Gbehlay-Geh (3), Sanniquellie-Mah (1), and Yarwin Mehnsonnoh (1) Districts
- 👉 A total of 690 cases have been confirmed including one death
  - Median age 7 (2 months- 48years)
  - Not Vaccinated: (429/690) 62%
  - Vaccinated: (151/690) 22%
  - CFR (1/690) 0.1%

## **Maryland County: Harper and Pleebo Districts (Situation update from 1<sup>st</sup> February- 6<sup>th</sup> November 2022)**

- 👉 Fourteen (14) new cases were reported from Pleebo District
- 👉 A total of 244 cases have been confirmed
  - Median age 7 (7 months-48 years)
  - Vaccinated: (27/244) 11%
  - Not Vaccinated: (55/244) 23%

## **Grand Bassa County: District #1, District #2, Owensgrove, and Buchanan Districts (Situation update from 22nd April -6<sup>th</sup> November 2022)**

- 👉 Twenty-six (26) new cases were reported from District # 2 (20 including 3 death), Buchanan (5 including 1 death), and District #3A&B (1) Districts
- 👉 A total of 691cases including seven (7) deaths have been confirmed
  - Median age 7 (1 month-45 years)
  - Vaccinated: (256/691) 37%
  - Not Vaccinated: (312/691) 45%
  - CFR (7/691) 1%

## **Bomi County: Klay, Senjeh, and Suehn Mecca Districts (Situation update from 14<sup>th</sup> March-6<sup>th</sup> November 2022)**

- 👉 One (1) new case was reported from Klay District
- 👉 A total of 67 cases have been confirmed including 5 deaths
  - Median age 7 (1 month-48 year)
  - Vaccinated: (23/67) 34%
  - Not Vaccinated: (21/67) 31%
  - CFR (5/67) 7%

## **Grand Kru: Barclayville and Trehn Districts (Situation update from 14<sup>th</sup> March – 6<sup>th</sup> November 2022)**

- 👉 Five (5) new cases were reported from Barclayville Districts
- 👉 A total of 135 cases have been confirmed
  - Median age 9 (53 months-18 years)
  - Vaccinated: (100/135) 74%
  - Not Vaccinated: (32/135) 24%

## **Rivercess: Doedain and Jowein Districts (Situation update from 16th March – 6th November 2022)**

- 👉 Three (3) new cases were reported from Central C District



# Liberia IDSR Epidemiology Bulletin

Epi-week 44 (October 31- November 6, 2022)

📁 A total of 75 confirmed cases have been confirmed including 1 death

- Median age 5 (6 months -36 years)
- Vaccinated: (17/75) 23%
- Not Vaccinated: (30/75) 40%
- CFR: (1/75) 1.3%

📁 **Margibi County: Firestone, Gibi, Kakata, and Mamba Kaba Districts (Situation update from 21<sup>st</sup> February–6<sup>th</sup> November 2022)**

📁 Two (2) new cases were reported from Gibi, and Kakata Districts

📁 A total of 548 cases have been confirmed

- Median age 6 (4 months - 67 years)
- Vaccinated: (270/548) 49%
- Not Vaccinated: (166/548) 30%

**Grand Cape Mount County: Gola Konneh, District (Situation update from 10th March –6<sup>th</sup> November 2022)**

📁 Six (6) new cases were reported from Tewor District

📁 A total of 112 cases have been confirmed including 3 deaths

- Median age 12 (2 months – 45 years)
- Vaccinated: (98/112) 88%
- Not Vaccinated: (12/112) 11%
- CFR: (3/112) 3%

**Grand Gedeh County: Tchien, Konobo, Bhai, and Gbao Districts (Situation update from 10th March–6<sup>th</sup> November 2022)**

📁 Eight (8) new cases were reported from Tchien (6), Konobo (1), and Putu (1) Districts

📁 A total of 128 cases have been confirmed

- Median age 6 (6 months-35 years)
- Vaccinated (46/120) 38%
- Not Vaccinated: (44/120) 37%

**Sinoe: Gblonee, Dugbeh River, Kpanyan, Jaedae and Jedepo Districts (Situation update from 19th May – 6<sup>th</sup> November 2022)**

📁 No new case was reported

📁 A total of 143 cases have been confirmed

- Median age 6 (2 months-38 years)
- Vaccinated: (71/143) 50%
- Not Vaccinated (20/143) 14%

## Public Health Response

### I Coordination

📁 Ongoing monitoring of measles surveillance data with the provision of feedback to relevant stakeholders and developmental partners

### II. Epidemiological Surveillance

📁 Active case search and line listing of cases

### III. Case Management

📁 Isolation and treatment of cases

### IV. Immunization

📁 Grand Bassa County intensified routine immunization in affected communities



# Liberia IDSR Epidemiology Bulletin

Epi-week 44 (October 31- November 6, 2022)

## V. Laboratory

Three hundred ninety-eight (398) cases have been confirmed by the laboratory from 62 health districts in 15 counties

## VI. Risk Communication and Community Engagement

- Community engagement and health education continue in affected and surrounding communities

## VII. Challenges

- Lacked essential medications and medical supplies for case management
- Delay lab results from NPHRL

## Next steps

- NPHIL/partners to procure essential drugs for case management
- Develop national Measles preparedness and response guide.
- Develop and validate the national Measles and Rubella Surveillance guide.
- Develop and validate Measles SOPs.
- Continue social mobilization

## Acute Flaccid Paralysis (AFP)

- Zero (0) cases were reported
- Cumulatively, ninety-eight (**98**) cases have been reported
  - 69 tested negatives
  - 16 NPENT
  - 12 pending testing
  - 1 under review

## Neonatal Tetanus

- Zero cases were reported
- Cumulatively, forty-six (46) clinically diagnosed cases reported

## Influenza-Like Illnesses

### Coronavirus Disease (COVID-19)

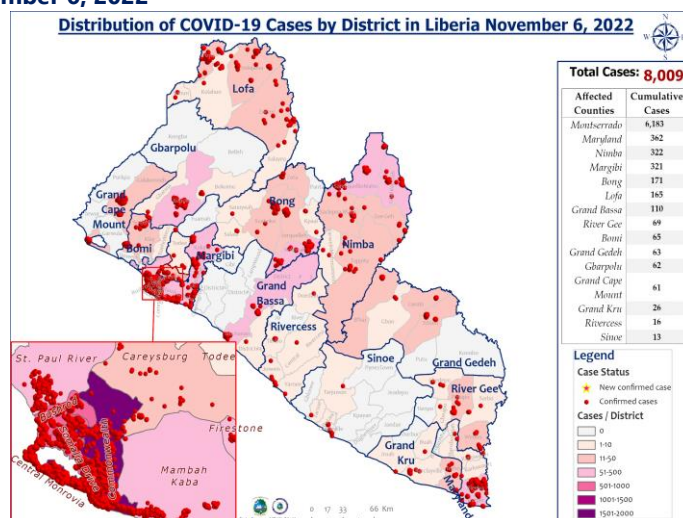
#### Outbreak

- Ten (10) new confirmed cases were reported from Montserrado (7) and Margibi (3) Counties
- A total of one thousand ninety-two (1,102) confirmed cases have been reported since epi week 1
- Cumulatively, seven thousand nine hundred ninety-nine (8,009) confirmed cases, including 294 deaths
  - 601 healthcare workers
- A total of 17,827 contacts have been generated
  - 1,772 healthcare workers

## Public Health Actions

- IMS coordination meeting ongoing.
- Surveillance activities including active case search and case investigation ongoing in the affected counties using WHO interim guidelines
- Case management ongoing for confirmed cases

**Figure 2: Geographical Distribution of Laboratory Confirmed COVID-19 Cases by Health Districts, Liberia, as of October 31- November 6, 2022**







# Liberia IDSR Epidemiology Bulletin

Epi-week 44 (October 31- November 6, 2022)

✍ Compulsory testing among outgoing travelers as required by the country of destination ongoing

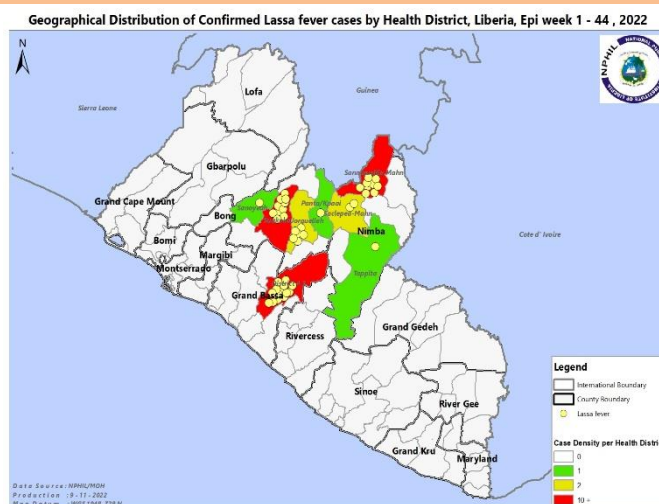
## Influenza

- ✍ Two (2) suspected cases were reported from Bong (2) county
- ✍ Specimens were collected and pending testing
- ✍ Cumulatively, fifty-six (56) cases have been reported

## Viral Hemorrhagic Diseases

### Lassa fever

- ✍ Eight (8) suspected cases were reported from Grand Bassa (5), and Nimba (3) Counties
- ✍ Eight (8) specimens were collected: 3 tested positive, 4 Negative, and 1 pending testing
- ✍ Cumulatively, one hundred seventy-one (171) suspected cases have been reported including 28 deaths
  - Fifty-nine (59) confirmed cases were recorded including 19 deaths
  - One hundred seven (107) negatives
  - Case Fatality Rate: (19/58) 33%
  - Proportion of suspected cases with sample collected (170/171) 99%
  - Proportion of suspected cases with sample tested (165/171) 96%
    - 2 samples rejected (inadequate specimen, wrong packaging)
    - 1 not collected



**Geographical distribution of confirmed Lassa fever cases by Health District, Liberia, Epi-week 1-44, 2022**

## Outbreak

### Lassa fever disease: (Sitrep update as of November 6, 2022)

- ✍ Two (2) new confirmed cases were reported from Grand Bassa, and Nimba Counties
- ✍ Eighty-nine (89) contacts under 21 days' follow-up
- ✍ Cumulatively, fifty-nine (59) laboratory-confirmed cases including 19 deaths reported (CFR=32%)

### Nimba: Saclepea-Mah District

- ✍ One new confirmed case was reported from Saclepea District
  - A 27-year-old male from Airfield Zone #3, Saclepea-Mah District
  - Onset of symptoms was October 23, 2022.
  - The case sought treatment at Saclepea Comprehensive Medical Center on October 26, 2022. He presented with a  $> 38.5^{\circ}\text{C}$ , joint pain, headache, stomach pain, vomiting and weakness for three days. He was diagnosed of Malaria, Typhoid and admitted in the facility for management.
  - The case was suspected of Lassa fever, isolated and specimen was collected on November 2, 2022, and sent to the NPHRL on the same day
  - Specimen was tested on November 8, 2022 and results released to the county the same day
  - A total of 10 contacts including 8 HCWs were line listed
- ✍ Cumulative confirmed cases: fourteen (14)
  - CFR (9/14) 64%
- ✍ Districts with confirmed cases since this year
  - Sanniquellie-Mah: 11 cases (7 deaths)
  - Sacleapea-Mah: 2 case (1 death)



# Liberia IDSR Epidemiology Bulletin

Epi-week 44 (October 31- November 6, 2022)

- Tappita: 1 case (dead)
- 👉 Cumulatively, 237 contacts including 143 HCWs have been generated since this year
  - 34 contacts are currently under follow-up and 203 completed monitoring

## Public Health Measures

- 👉 NPHIL and MOH providing technical support to the county
  - Health workers and visitors are encouraged to enhance IPC practices by regular washing of hands

## Grand Bassa: District #3A&B

- 👉 Two new confirmed cases were reported from District #3A&B

### CASE 1

- 👉 A 18-year-old from Food Crops Camp District #3A&B
- 👉 Onset of symptoms was October 24, 2022
- 👉 The cases sought treatment at LAC Plantation Hospital on October 31, 2022. She presented with high fever (>38.5°C) headache, chest pain weakness and abdominal pain.
- 👉 The case was isolated and specimen was collected November 5, 2022 and sent the same day to the NPHIL
- 👉 Specimen got tested November 8, 2022 and results released to the county the same day
- 👉 One contact was line listed

### CASE 2

- 👉 A 19-year-old from Gorghon District #3 A&B
- 👉 Onset of symptoms was October 23, 2022
- 👉 The cases sought treatment at LAC Plantation Hospital on October 30, 2022. She presented with high fever (>38.5°C) headache, decreased in appetite and cough.
- 👉 The case was isolated and specimen was collected November 4, 2022 and sent the same day to the NPHIL
- 👉 Specimen got tested November 8, 2022 and results released to the county the same day
- 👉 Five (5) contacts were line listed
- 👉 Cumulative confirmed cases: twenty-five (25)
  - CFR (6/25) 24%
- 👉 District that has reported confirmed cases since this year
  - District #3 A&B
- 👉 Cumulatively, 112 contacts generated since this year
  - Twelve (12) contacts are currently under follow up and 100 completed monitoring

## Public Health Measures

- 👉 NPHIL and MOH providing technical support to the county
  - Health workers and visitors are encouraged to enhance IPC practices by regular washing of hands
  - Limited community engagement

## Bong County: Suakoko District

- 👉 Cumulative confirmed cases: nineteen (19)
  - CFR: (4/19) 21%
- 👉 Districts that have reported confirmed cases since this year
  - Suakoko District: 14 cases (3 deaths)
  - Jorquelleh District: 3 cases (1 death)
  - Sanoyea District: 1 case
  - Kpaai District: 1 case
- 👉 Cumulatively, 190 contacts including 113 HCWs have been recorded since this year
  - 15 contacts are currently under follow-up and 175 completed monitoring

## Public Health Measures

- 👉 Risk communication interventions
  - Daily health talk in all health facilities on priority diseases
  - Airing of LF preventive and control messages
- 👉 Case Management



# Liberia IDSR Epidemiology Bulletin

Epi-week 44 (October 31- November 6, 2022)

- Confirmed case is isolated and being managed

## 📁 Surveillance

- Active case search ongoing in the affected health districts
- Heighten surveillance in all affected communities and districts
- Daily situational reports are shared regularly at the national level

## Montserrado: Central Monrovia

- 📁 No new confirmed case reported
- 📁 Cumulatively confirmed cases: one (1)
- 📁 Cumulatively, 28 contacts were generated including 23 healthcare workers and 5 family line list

## Yellow fever

- 📁 Three (3) suspected cases were reported from Rivercess, Maryland, and Montserrado Counties
- 📁 Specimens were collected 2 transported and 1 discarded
- 📁 Cumulatively, eighty (80) suspected cases have been reported
  - Proportion of suspected cases with sample collected (71/80) 89%
  - Proportion of sample collected and tested (59/71) 83%
    - 59 negative
  - Samples pending testing (9/71) 13%
  - Samples not transported (5/71) 7%

## Ebola Virus Disease

- 📁 Zero suspected case was reported
- 📁 Cumulatively, one (1) suspected case has been reported

## Diarrheal Diseases

### Acute Bloody Diarrhea (Suspected Shigellosis)

- 📁 Seven (7) cases were reported from River Gee (2), Lofa (2), Nimba (1), Grand Bassa (1), and Rivercess (1) Counties
- 📁 Two (2) specimens were collected and pending testing
- 📁 Cumulatively, four hundred two (402) suspected cases reported
- 📁 Two hundred one (201) specimens were collected; 163 received by the lab
  - 126 tested negatives
    - 1 positive (Grand Gedeh)
  - 11 rejected (inadequate specimen, wrong packaging)
  - 25 specimens discarded

### Severe Acute Watery Diarrhea (Suspected Cholera)

- 📁 Eight (8) cases were reported from River Gee (2), Lofa (2), Nimba (2), Maryland (1), and Grand Gedeh (1) Counties
- 📁 Three (3) specimens were collected and pending testing
- 📁 Cumulatively, three hundred, twenty-four (326) suspected cases reported
  - 183 specimens collected; 113 received by the lab
    - 76 tested negatives
  - 5 rejected (inadequate specimen, wrong packaging, specimen not label)
  - 32 specimens discarded

## Other Reportable Diseases

### Animal bite (Human Exposure to Rabies)

- 📁 Twenty-seven (27) animal bite cases were reported: Montserrado (6), Nimba (5), Grand Kru (4), Maryland (3), Grand Gedeh (2), Rivercess (2), Bomi (2), Grand Bassa (2) and Margibi (1) Counties
- 📁 Persons received Post Exposure Prophylaxis (PEP) (7/27) 26%





# Liberia IDSR Epidemiology Bulletin

Epi-week 44 (October 31- November 6, 2022)

- 📁 Cumulatively, one thousand eight hundred fourteen (1,814) animal bite cases reported
  - Dog bites account for 100%
    - 1-4 doses (PEP) administered to (314/1,814) 17% of patients

## Public Health Actions

- 📁 Ongoing monitoring and follow-up of cases
- 📁 Quarantined (2/27) 7% of suspected rabid dogs

## Meningitis

- 📁 One suspected case reported from Grand Kru County
- 📁 Specimen was collected and transported
- 📁 Cumulatively, thirty (30) suspected cases reported with one (1) confirmed

## Monkeypox

- 📁 One suspected case was reported Lofa county
- 📁 Specimen was collected and tested negative
- 📁 Cumulatively, fifty-four (54) suspected cases reported with three (3) confirmed

## Events of Public Health Importance

### Maternal Mortality

- 📁 Two (2) deaths were reported from Bong and Nimba Counties
- 📁 Cause of death: Postpartum hemorrhage
- 📁 Reported from:
  - Health facility: 2 (100%)
- 📁 Cumulatively, two hundred forty-three (243) deaths have been reported
  - Proportion of deaths reviewed (49/243) 20%
  - Proportion of community deaths (24/243) 10%
    - Proportion of community deaths reviewed: (8/24) 33%

### Neonatal Mortality

- 📁 Thirteen (13) deaths were reported: Montserrado (3), Nimba (3), Margibi (2), Bomi (2), Maryland (1), Gbarpolu (1), and Grand Gedeh (1) Counties
- 📁 Causes of death: Birth asphyxia (9), Neonatal Sepsis (3), and Preterm (1)
- 📁 Reported from:
  - Health facility: 12 (92%)
  - Community: 1
- 📁 Cumulatively, six hundred sixty-three (663) deaths have been reported
  - The proportion of deaths reviewed (79/663) 12%
  - Proportion of community deaths (30/663) 5%
    - Proportion of deaths reviewed from the community (8/30) 27%

### Adverse Events Following Immunization (AEFI)/Adverse Drug Reaction (ADR)

- 📁 Six (6) cases were reported: Sinoe (2), Grand Gedeh (2), Lofa (1), and Grand Kru (1) Counties
  - Related vaccines:
    - COVID-19 (2/6) 33%
    - Penta (4/6) 67%
- 📁 Cumulatively, five hundred forty-one (541) events were reported with (381/541) 70% related to COVID-19
- 📁 Proportion of COVID-19 vaccine
  - J&J vaccine – (276/381) 72%
  - AstraZeneca – (6/381) 2%
  - Pfizer – (99/381) 26%
- 📁 Proportion of other vaccine-related events – (160/541) 30%



# Liberia IDSR Epidemiology Bulletin

Epi-week 44 (October 31- November 6, 2022)

## Public Health Actions

- ☞ All events were investigated, categorized as non-serious AEFI, and symptomatically treated
- ☞ Active case search and community engagement ongoing

## Border Surveillance Update

**Table2: Border activity at the PoE for Incoming and Outgoing Travelers, Liberia, Epi week 44, 2022**

☞ A total of 5,385 travelers were recorded for the week with incoming travelers accounting for 53% (2,858/5,385)

Type of Ports	Point of Entry	Weekly total	Arrival	Departure	Total travelers with YB	Yellow Book Damage	Card Replaced	Travelers Vaccinated against YF & Issued	Alerts detected/ Verified	COVID-19 Reactive	Evidence of COVID-19 vaccination card/certificate
Airport	James S. Paynes	67	42	25	67	0	0	0	0	0	60
	Robert Int'l Airport	4139	2143	1996	4114	18	0	7	0	0	4112
Seaport	Freeport of Monrovia	130	65	65	130	0	0	0	0	0	130
	Buchanan Port	96	48	48	96	0	0	0	0	0	96
Land Crossing	Bo Water Side	478	317	161	452	0	6	20	0	0	465
	Ganta	147	65	82	127	8	12	0	0	0	60
	Yekepa	191	92	99	181	10	0	0	0	0	85
	Loguatu	137	86	51	130	7	0	0	0	0	51
Total		5,385	2,858	2,527	5,297	43	18	27	0	0	5,059

**Note: Yellow book issue for both arrival and departure; Vaccination coverage for both arrival and departure**

## Public Health Measures

### National level

- ☞ MSF donated PPE (gloves, isolation gowns, surgical masks, face shields, and alcohol-based hand rub) and 700 tablets of ribavirin 200mg to Redemption Hospital
- ☞ Trained fifty-four health professionals to conduct Influenza sentinel surveillance at the Liberian Government Hospital in Grand Bassa County
- ☞ Operational Activity
  - Continued support for operational activities ongoing

### County-level

#### ☞ Surveillance

- Publication of situational reports
- Active case search ongoing in affected and surrounding communities

#### ☞ Case Management

- Administration of PEP and ribavirin
- Management of measles cases ongoing

# Appendix

## Summary of Immediately Reportable Diseases, Conditions, and Events by County

			Bomi	Bong	Gbarpolu	Grand Bassa	Grand Cape Mount	Grand Gedeh	Grand Kru	Lofa	Margibi	Maryland	Montserrado	Nimba	Rivercess	River Gee	Sinoe	Total Weekly	Cumulative Reported	Cumulative Lab-confirmed
No. of Expected Health District			4	9	5	8	5	6	5	6	4	6	7	6	6	6	10	93		
No. of Health District Reported			4	9	5	8	5	6	5	6	4	6	7	6	6	6	10	93		
Vaccine Preventable Diseases	Acute Flaccid Paralysis (Suspected Polio)	A	0	0	0	0	0	0	0	0	0	0	0	0	0	0	0	0	103	0
		D	0	0	0	0	0	0	0	0	0	0	0	0	0	0	0	0	0	0
	Measles	A	1	0	0	22	6	8	6	5	2	14	16	5	3	0	0	88	8,071	489
		D	0	0	0	4	0	0	0	0	0	0	0	0	0	0	0	4	77	0
	Neonatal Tetanus	A	0	0	0	0	0	0	0	0	0	0	0	0	0	0	0	0	43	0
		D	0	0	0	0	0	0	0	0	0	0	0	0	0	0	0	0	3	0
	Yellow fever	A	0	0	0	0	0	0	0	0	0	1	1	0	1	0	0	3	77	0
		D	0	0	0	0	0	0	0	0	0	0	0	0	0	0	0	0	0	0
Viral Hemorrhagic Fever	Dengue fever	A	0	0	0	0	0	0	0	0	0	0	0	0	0	0	0	0	0	0
		D	0	0	0	0	0	0	0	0	0	0	0	0	0	0	0	0	1	0
	Ebola Virus Disease	A	0	0	0	0	0	0	0	0	0	0	0	0	0	0	0	0	0	0
		D	0	0	0	0	0	0	0	0	0	0	0	0	0	0	0	0	0	0
	Lassa fever	A	0	0	0	5	0	0	0	0	0	0	0	3	0	0	0	8	135	37
		D	0	0	0	0	0	0	0	0	0	0	0	0	0	0	0	0	26	18
Influenza-Like Illnesses	COVID-19	A	0	0	0	0	0	0	0	0	3	0	7	0	0	0	0	10	8,009	8,009
		D	0	0	0	0	0	0	0	0	0	0	0	0	0	0	0	0	0	294
	Influenza	A	0	2	0	0	0	0	0	0	0	0	0	0	0	0	0	2	50	0
		D	0	0	0	0	0	0	0	0	0	0	0	0	0	0	0	0	0	0
Diarrheal Diseases	Acute Bloody Diarrhoea (Shigellosis)	A	0	0	0	1	0	0	0	2	0	0	0	1	1	2	0	7	396	1
		D	0	0	0	0	0	0	0	0	0	0	0	0	0	0	0	0	0	0
	Severe Acute Watery Diarrhoea (Cholera)	A	0	0	0	1	0	0	0	2	0	1	0	2	0	2	0	8	316	0
		D	0	0	0	0	0	0	0	0	0	0	0	0	0	0	0	0	0	0
Events of Public Health Importance	Maternal Mortality	D	0	1	0	0	0	0	0	0	0	0	0	1	0	0	0	2	241	
	Neonatal Mortality	D	2	0	1	0	0	1	0	0	2	1	3	3	0	0	0	13	650	
	Adverse Events Following Immunization (AEFI)	A	0	0	0	0	0	2	1	1	0	0	0	0	0	0	2	6	535	0
		D	0	0	0	0	0	0	0	0	0	0	0	0	0	0	0	0	0	0
	Unexplained Cluster of Health Events/Disease	A	0	0	0	0	0	0	0	0	0	0	0	0	0	0	0	0	0	0
		D	0	0	0	0	0	0	0	0	0	0	0	0	0	0	0	0	0	0
Other Reportable Diseases	Monkeypox	A	0	0	0	0	0	0	0	0	0	0	0	0	0	0	0	0	53	2
		D	0	0	0	0	0	0	0	0	0	0	0	0	0	0	0	0	0	0
	Tuberculosis	A	0	0	0	0	0	0	0	0	0	0	0	0	0	0	0	0	0	0
		D	0	0	0	0	0	0	0	0	0	0	0	0	0	0	0	0	0	0
	Human Exposure to Rabies (Suspected Human Rabies)	A	1	0	0	2	0	3	5	2	5	3	13	6	4	0	1	45	1,787	0
		D	0	0	0	0	0	0	0	0	0	0	0	0	0	0	0	0	1	0
	Meningitis	A	0	0	0	0	0	0	0	0	0	0	0	0	0	0	0	0	26	1
		D	0	0	0	0	0	0	0	0	0	0	0	0	0	0	0	0	0	0
	Unexplained Cluster of deaths	A	0	0	0	0	0	0	0	0	0	0	0	0	0	0	0	0	0	0
		D	0	0	0	0	0	0	0	0	0	0	0	0	0	0	0	0	0	0
Neglected Tropical Diseases	Buruli Ulcer	A	0	0	0	0	0	0	0	0	0	0	0	0	0	0	0	0	0	0
		D	0	0	0	0	0	0	0	0	0	0	0	0	0	0	0	0	0	0
	Yaws	A	0	0	0	0	0	0	0	0	0	0	0	0	0	0	0	0	0	0
		D	0	0	0	0	0	0	0	0	0	0	0	0	0	0	0	0	0	0
TOTAL			4	3	1	35	6	14	12	12	12	20	40	21	9	4	3	196	20600	8851

D = Dead A = Alive

## Notes

- 👉 **Completeness** refers to the proportion of expected weekly IDSR reports received (target:  $\geq 80\%$ )
- 👉 **Timeliness** refers to the proportion of expected weekly IDSR reports received by the next level on time (target:  $\geq 80\%$ ). The time requirement for weekly IDSR reports:
  - Health facility - required on or before 5:00 pm every Saturday to the district level
  - Health district - required on or before 5:00 pm every Sunday to the county level
  - County - required on or before 5:00 pm every Monday to the national level
- 👉 **Non-polio AFP rate** is the proportion of non-polio AFP cases per 100,000 among the estimated population under 15 years of age in 2017 (annual target:  $\geq 2/100,000$ )
- 👉 **Non-measles febrile rash illness rate** refers to the proportion of Negative measles cases per 100,000 population
- 👉 **Annualized maternal mortality rate** refers to the maternal mortality rate of a given period less than one year and it is the number of maternal deaths per 100,000 live births
- 👉 **Annualized neonatal mortality rate** refers to the neonatal mortality ratio of a given period less than one year and it is the number of neonatal deaths per 1,000 live births
- 👉 **Epi-linked** refers to any suspected case that has not had a specimen taken for serologic confirmation but is linked to a laboratory confirmed case
- 👉 **Confirmed case** refers to a case whose specimen has been tested positive or reactive upon laboratory testing, or has been classified as confirmed by either epidemiologic linkage with a confirmed case, or clinical compatibility with the disease or condition

Epidemiological bulletin published with support from WHO and CDC

### For comments or questions, please contact

Ralph W. Jetoh, MD, MPH

**Director**

Infectious Disease and Epidemiology Division  
National Public Health Institute of Liberia  
Republic of Liberia

Email: [ralphica2000@gmail.com](mailto:ralphica2000@gmail.com)

Phone: +231 886526388/777372655

Website: [www.nphil.gov.lr](http://www.nphil.gov.lr)

## National Public Health Institute of Liberia (NPHIL)

### MISSION

To prevent and control public health threats by promoting healthy outcomes and serving as a source of knowledge

### VISION

A center of excellence to create health outcomes for Liberians through a strong preventive health system and expertise

## EDITORIAL TEAM

### DIDE / NPHIL

A. N. Mianah  
I. P. Pewu  
T. O. Yeabah  
J. S. Kokro  
E. Dwalu  
A.B. Corvah  
G. B. Williams  
S. K. Zayzay  
L. W. Colee  
M. Tegli  
T. L. Hall  
S. L. Flomo  
M. S. Quiah  
C. T. Yeah  
L. K. Seepoe  
J. O. Abel  
P. J. Thomas  
H. M. Sherman  
M.D. Vaye  
N. K. Dovillie  
A. Coker  
S. Nuwolo

**Ministry of Health  
WHO Liberia Office**

### Data sources

Data and information is provided by the fifteen County Surveillance Officers and National Public Health Reference Laboratory via regular weekly reports, telephone calls and email exchanges. Situations are evolving and dynamic therefore numbers stated are subject to change.